

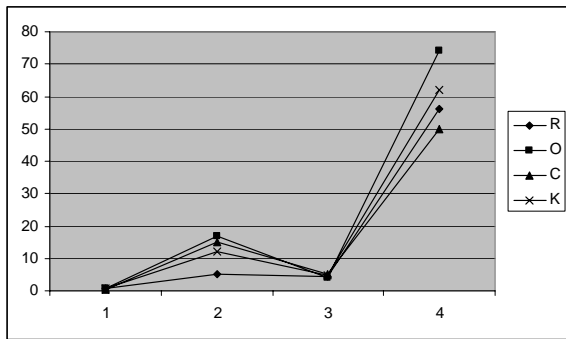
# Example abstract for the Goldschmidt conference volume

J. A. DASHWOOD<sup>1\*</sup>, M. BINGLEY<sup>2</sup>, C. LUCAS<sup>2</sup>,  
C. DE BOURGH<sup>1</sup> AND M. COLLINS<sup>3</sup>

<sup>1</sup>Austen Institute, Washington Univ., St. Louis, MO 63130, USA (\*correspondence: dashwood@uni-mo.edu)  
<sup>2</sup>CRPG/CNRS, BP 20, 54501, Nancy, France (mbigley@uni.fr, clucas@uni.fr)  
<sup>3</sup>University of Tokyo, Tokyo 113-0033, Japan

## Revolutionary New Method

Our revolutionary new method is too valuable to disseminate in detail. We have based our methodology on that of others who have attempted to answer this question before [1, 2]. We will therefore only provide the minimum of information. Our results are shown in the figure and table below. Other results would indicate that we might be on to something big [3].



**Figure 1:** Sample figures used to display correct layout and suitable labelling.

Variable	C1	H2	E3	M4
R	0.65	5	4.23	56
O	0.76	12	4.12	74
C	0.55	13	5.10	55
K	0.79	12	4.77	62

**Table 1:** Sample table used to display correct layout and suitable font sizing.

## Discussion of Results

Most recently, Brandon *et al.* [4] have suggested a new interpretation of the previously collected data. A clear relation between the ordinate and the abscissa can be seen from the above graph.

A complete discussion of the importance of these results will be begun once we have completed the analysis. Further results may be obtained if the equipment used can be repaired before the conference. Similar results have also been found by using the same methods at weekends [5].

[1] Dashwood (1994) *Rev. Geophys* **33**, 223-237. [2] Pratt & Jennings (1986) *GCA* **48**, 629-637. [3] Ferrars *et al.* (2003) *Science* **270**, 1142-1145. [4] Brandon *et al.* (1811) *S&S* **431**, 651-657. [5] Steele *et al.* (2008) *GCA*, this volume.

## Title

AUTHORS

Address  
Address  
Address

## Section Heading

Body text

Figure caption

Figure caption

## Section Heading

Body text

Body text

References